

Permits are required as of August 31, 2015 and can be picked up at the Town Office prior to dropping off items, and are good for 1 year. \$20 for Town and \$10 for Unorganized.

Disposal Rates:

Tires: Up to 14 inch \$2.00 each. 15-17 inch \$4.00 each. 18-22 inch Large Truck \$10.00each. **Note: No large equipment tires accepted.**

Freon Appliances: \$10.00 each

Shingles: \$50.00 per level pickup load. Must be clean, without Wood, Paper, plastic, or Metal.

Demolition Materials: Residential only, no commercial projects, or large amounts

Material will be accepted from small one-room remodeling projects due to budget restraints. Larger projects and house tare-downs will have to make other arrangements to haul their material to a licensed landfill at their expense. Bricks, cement, toilets go into a separate pile. Carpets, and siding must be cut up 4'x4' before entering the hoppers.

Burn Pile: Furniture with fabric , mattresses, and box springs are not allowed to be burned, and can go into the hoppers. Only wood can be burned at the burn pile. Pellet and wood ashes can be placed in the burn pile area.

Universal Waste: TV's, computer screens, light bulbs, mercury switches are collected at no charge but must go into the brown garage building next to the recycle building.

Unacceptable Wastes:Asbestos, Gasoline, Antifreeze, and Rimmed Tires.

Please keep brush pile clean! No nails, lumber, or trash.

The Town's solid waste and recycling facility is open to residents of Millinocket and residents of the Unorganized territories of IP3,IP4,T3 R9, NWP, TA R7 Wels, Long A Hopkins Academy Grant, Veazie Gore, T1 R8 in Penobscot County,T1 R9 Wels, TA R10 Piscataquis County. The same fees apply to all users. You must separate recyclables from the trash.

Hours of Operation

Monday, Tuesday, Friday 9am—4pm
Saturday 8am—4pm. Compost Area 24/7.
Closed: Weds-Thurs-Sundays, and other posted holidays.

The following items are **banned from the compactor hoppers** and must be recycled per Town Ordinance.

>> Cardboard, Paperboard egg crates and package containers, Magazines, Newspapers, Tin Cans, Plastic Containers, Metal, Office Paper, Books remove hard covers, White Goods with Freon, Appliances. Tires, Shingles.

Note: It cost the Town \$100/ton to dispose anything that goes into the hoppers! Any item you drop off at the recycle building the town gets paid \$100/ton. The only other option is pay as you throw. Let's keep this system we have by recycling as much as we can.



**TOWN OF
MILLINOCKET**

Transfer Station Guide for Trash Disposal & Recycling



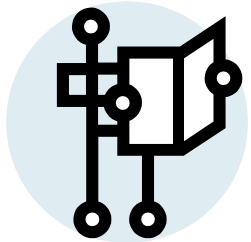
Why Recycle?

It saves the Town fees for Trash Disposal ,and brings in revenue thus reducing the facilities operating cost, which lowers taxes!

Tel: Transfer Station 723-7037

Tel: Public Works 723-7030

Main Inside Heading



Caption describing picture or graphic.

The most important information is included here on the inside panels. Use these panels to introduce your organization and describe specific products or services. This text should be brief and should entice the reader to want to know more about the product or service.

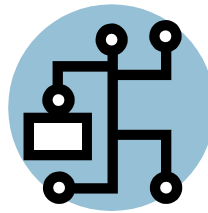
vice.

You can use secondary headings to organize your text to make it more scannable for the reader.

Lorem ipsum dolor sit amet, consectetur adipiscing elit, sed diam nonummy nibh euismod tincidunt ut laoreet dolore et accusan et iusto odio dignissim qui mmy nibh euismod tincidunt ut laoreet dolore magna aliquam erat volutpat.

SECONDARY HEADING

Lorem ipsum dolor sit amet, consectetur adipiscing elit, sed diam nonummy nibh euismod tincidunt ut laoreet dolore magna aliquam erat volutpat. Ut wisis enim ad



Caption describing picture or graphic.

minim veniam, consequat, vel illum dolore eu feugiat nulla facilisis at vero eros et accusan et iusto odio dignissim qui blandit praesent luptatum. Lorem ipsum dolor sit amet, consectetur adipiscing elit, sed diam nonummy nibh euismod tincidunt ut laoreet dolore magna aliquam erat volutpat. Ut wisis enim ad minim veniam, consequat, vel illum dolore eu feugiat

nulla facilisis at vero eros et accusan.

SECONDARY HEADING

Lorem ipsum dolor sit amet, consectetur adipiscing elit, sed diam nonummy nibh euismod tincidunt ut laoreet dolore magna aliquam erat volutpat. Ut wisis enim ad minim veniam, quis nostrud exercitation ullamcorper suscipit lobortis nisl ut aliquip ex ea commodo consequat. Duis te feugifacilisi. Duis autem dolor in hendrerit in vulputate velit esse molestie consequat, vel illum dolore eu feugiat nulla facilisis at vero eros et accusan et iusto odio dignissim qui

blandit praesent luptatum zzril delenit augue duis dolore te feugiat nulla facilisi. Ut wisis enim ad minim veniam, quis nostrud exercitation ullamcorper suscipit lobortis nisl ut aliquip ex ea commodo consequat. Duis te feugifacilisi per suscipit lobortis nisl ut aliquip ex ea commodo consequat. Lorem ipsum dolor sit amet, consectetur adipiscing elit, sed diam nonummy nibh euismod tincidunt ut laoreet dolore magna aliquam erat volutpat.

MICROSOFT

Primary Business Address
Your Address Line 2
Your Address Line 3
Your Address Line 4

Phone: 555-555-5555

Fax: 555-555-5555

E-mail: someone@example.com