



<https://www.seton.com/no-idling-sign-new-jersey-sp423.html>
<https://www.sanantonio.gov/sustainability/Sustainable-Transportation/AirQuality/AntiIdling>

MORE EFFICIENT VEHICLES

1. ELECTRIC Government Vehicles
2. PUBLIC Electric Vehicle (EV) Charging Stations
3. Ordinances to support EV chargers on businesses, multifamily homes, etc.
4. ANTI-IDLING Ordinances

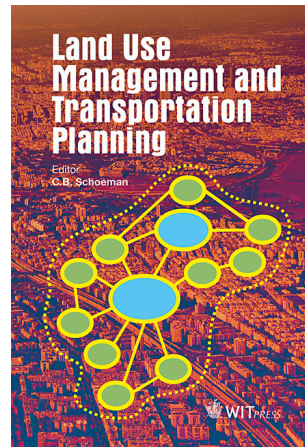


5. Public & Alternative Transportation





6. Improve safety through a Complete Streets policy



7. Policies to locate new development close to where people live



8. Encourage TELEWORK for government employees

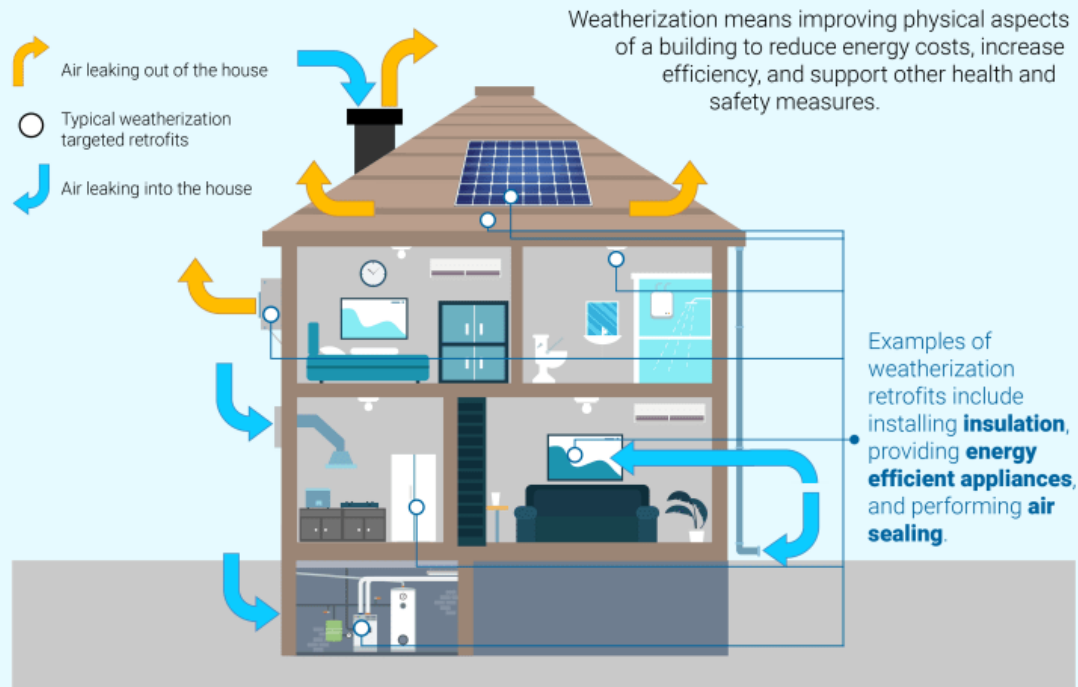


9. Improve broadband to support telework, remote education & telehealth

REDUCE Driving

Image sources left to right: <https://smartgrowthamerica.org/what-are-complete-streets/>; <https://www.witpress.com/books/978-1-78466-077-2>; <https://procurement.fbi.gov/2020/06/30/telework-equipment-supplies-for-remote-location-delivery-now-available-in-ebuy/>; <https://gscbn.com/>

What is weatherization?



Weatherization national statistics:

\$283

In annual energy cost savings per household

\$2.78

In non-energy benefits, including improved health and safety, for every \$1.00 invested

Source: Brookings Institution; Department of Energy Weatherization Assistance Program.
House vector art courtesy of Freepik.com.

B Metropolitan Policy Program
at BROOKINGS

<https://www.brookings.edu/blog/the-avenue/2021/04/22/weatherizing-homes-could-be-one-of-the-most-vital-legacies-of-bidens-infrastructure-plan/>

WEATHERIZE TO SAVE ENERGY & MONEY

10. Government buildings (including schools)
11. Businesses
12. Homes
13. New buildings

UPGRADE TO
ENERGY
EFFICIENT
LIGHTING



14. Government buildings (including schools)

15. Businesses

LED Light-Emitting Diode

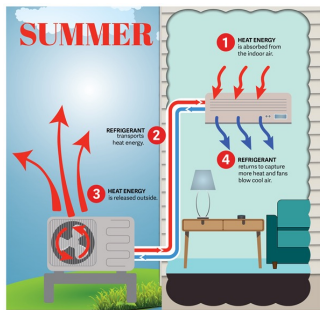
16. Homes

17. New buildings

18. Streetlights

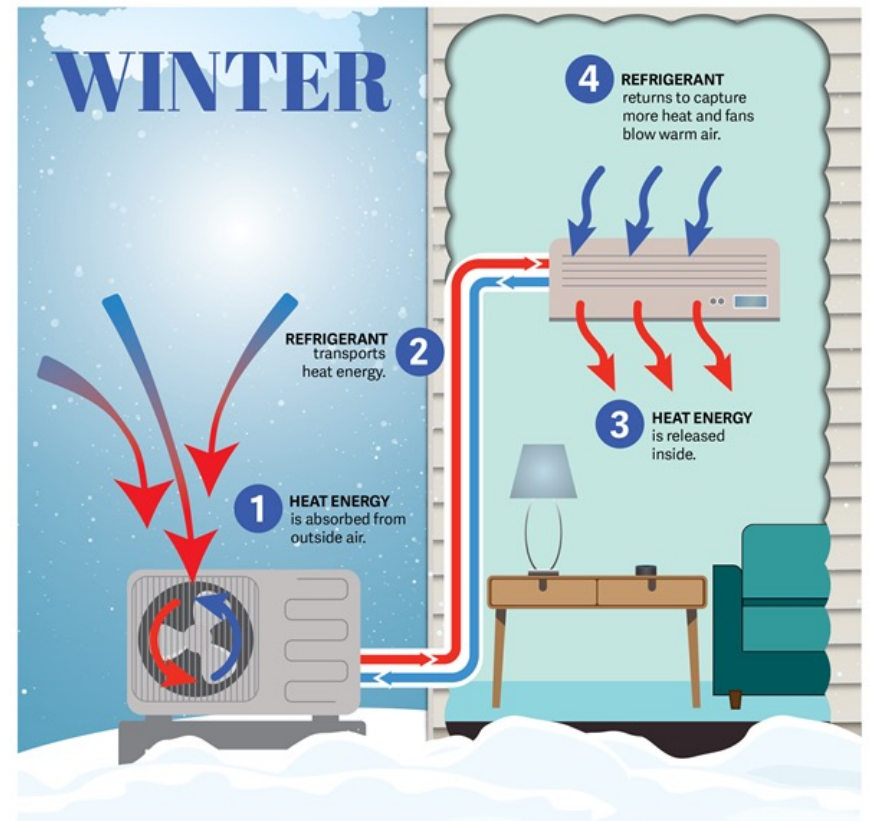


<https://www.islandinstitute.org/working-waterfront/heat-pumps-harvest-warmth-from-cold-air/>



HEAT PUMPS

- 19. Government buildings
- 20. Businesses
- 21. Homes
- 22. New buildings



<https://www.mge.com/saving-energy/for-homes/heating-and-cooling/geothermal-heat-pumps>

Sustainable Construction Methods



Reduce Waste



Recycle



Conserve Energy



Build Green
Buildings



Use Sustainable
Resources



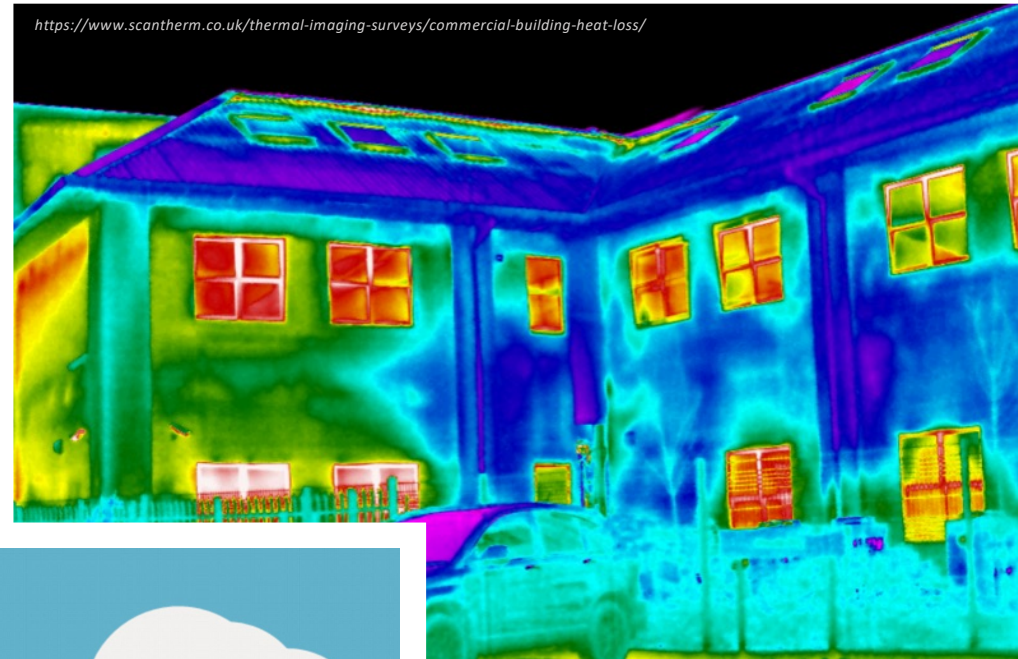
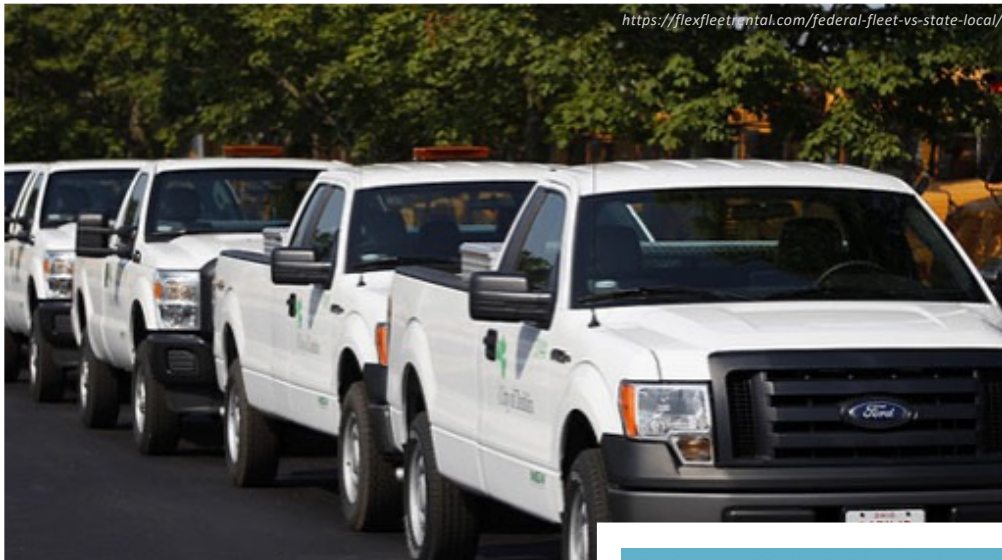
<https://www.bigrentz.com/blog/sustainable-construction>

Support sustainable new construction

23. Energy efficient code-enforcement training support

24. Energy efficient building codes

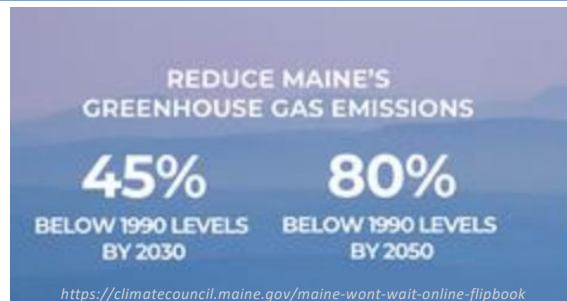
25. Prioritize Maine sustainable forest products in construction



ENERGY & EMISSIONS: Track, target

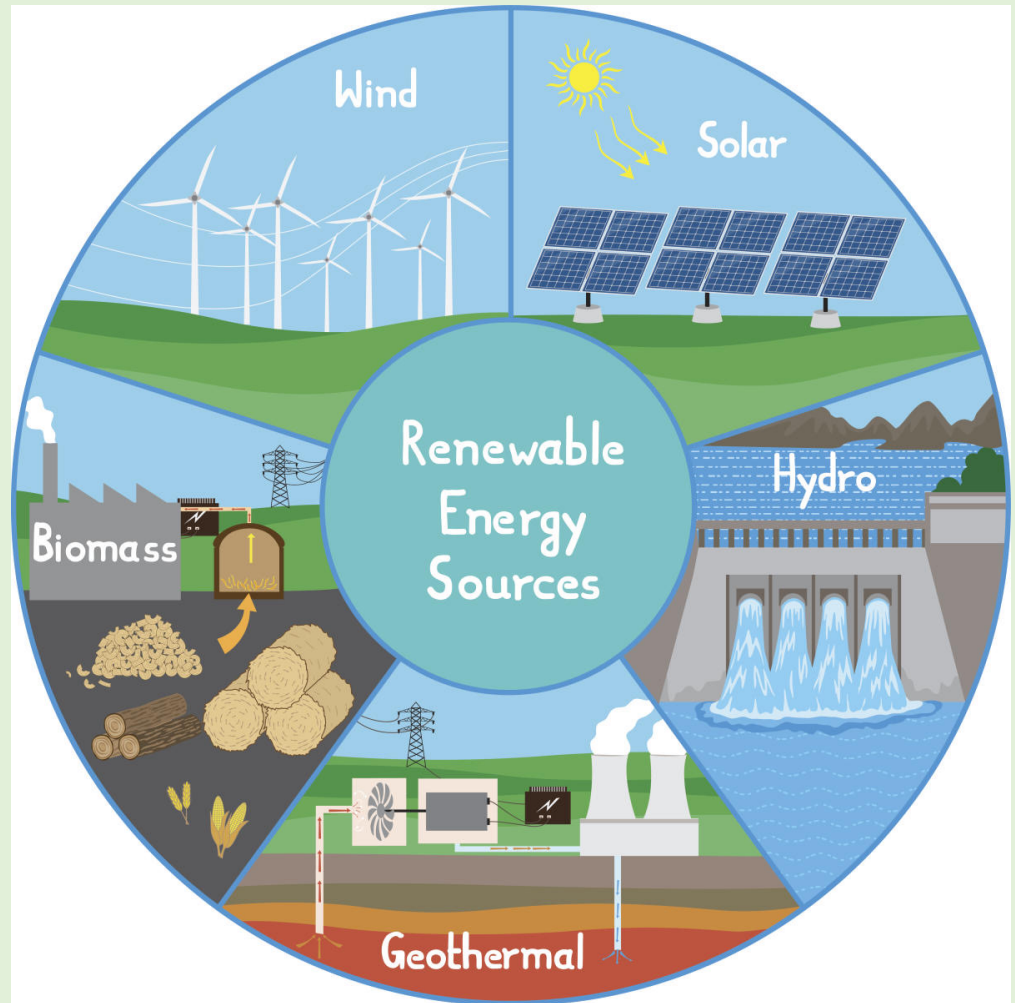
26. Government

27. Residents & businesses



SUPPORT/ INSTALL RENEWABLE ENERGY (RE)

- 28. Adopt local supportive ordinance
- 29. Streamline permitting processes
- 30. Buy RE from outside community
- 31. Community-owned RE
- 32. Solarize campaign (*bulk purchase for residents*)
- 33. Incentivize clean energy businesses
- 34. Support RE in economic development plan
- 35. Install RE on brownfields (*previously developed land*)



<https://www.deccanherald.com/content/661665/impacts-renewable-energy-projects.html>

NREL's SolarApp
Streamlines Solar
Permitting



<https://www.youtube.com/watch?reload=1&v=s-zKmtgVPDs>



<https://www.dnv.com/Publications/energy-storage-systems-in-the-asia-pacific-region-205518>

<https://wgme.com/news/local/lovell-community-members-shocked-by-solar-plans-propose-ordinance-to-stop-it>



PROTECT & CONSERVE LAND

- 36. Adopt policies to support local food systems
- 37. Set tree-planting & green space targets
- 38. Adopt 30% land conservation goal by 2030
- 39. Develop natural resource & habitat inventory



CONSERVING LAND FOR BIODIVERSITY

EXPAND OUR REGION'S PROTECTED LANDS AND WATERS IN ACCORDANCE WITH THE NATION'S 30X30 VISION TO CONSERVE NATURE, ENSURING NO LOSS OF NATURAL LANDS AND DEFINING SHORT-TERM, MEDIUM-TERM, AND LONG-TERM TARGETS FOR LANDSCAPE PROTECTION

https://www.chicagowilderness.org/page/Adding_conservation_lands_goal



Upper Llano River Watershed Protection Plan

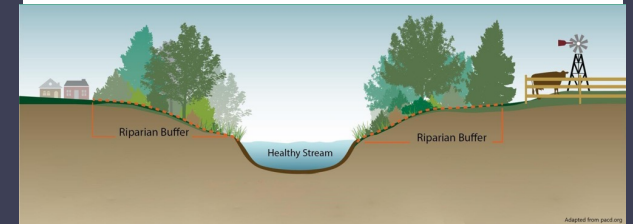


<https://www.depts.ttu.edu/junction/lrfs/ULRWPP.php>

<https://images.routledge.com/common/jackets/amazon/978036757/9780367573836.jpg>

LIVING SHORELINES

The Science and Management
of Nature-Based Coastal Protection



<https://www.albemarle.org/government/community-development/learn-more-about/stream-health/riparian-buffers>



LAND USE AND WETLANDS: Zoning Opportunities to Improve Wetland Protection



www.wisconsinwetlands.org



<https://www.yumpu.com/en/document/view/50412306/land-use-and-wetlands-wisconsin-wetlands-association>

PROTECT & CONSERVE WATER

40. Adopt watershed protection plan & policies
41. Protect/ establish waterway buffer zones
42. Implement source water protection program
43. Protect living shorelines



<https://millstonenews.com/new-signs-to-mark-drinking-water-protection-zones/>



<https://www.cityofirvine.org/news-media/news-article/local-hazard-mitigation-plan-public-review>



<https://www.cityofpalma.org/632/Local-Hazard-Mitigation-Plan>



<https://www.raritanboro.org/Departments/public-works;>
https://www.123rf.com/clipart-vector/evacuation_plan.html?sti=lfquwsx67jmuwp6w41

Impacts from climate change are being experienced today. Climate resilience is the ability to effectively manage those impacts.

City of Austin, Texas, Climate Resilience Action Plan, April 2018



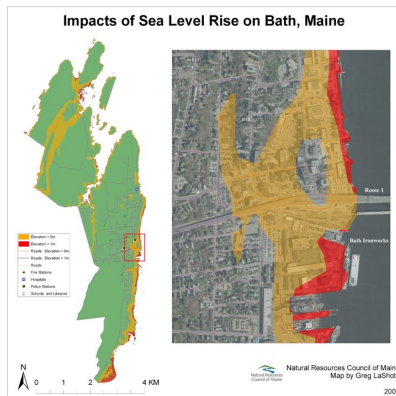
Climate Change & Food Security Vulnerability Assessment

Toolkit for assessing community-level potential for adaptation to climate change

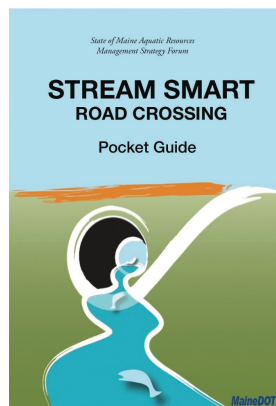
<https://ccafs.cgiar.org/resources/publications/climate-change-food-security-vulnerability-assessment-toolkit-assessing>; <https://www.bbc.co.uk/newsround/57912333>

IMPROVE COMMUNITY RESILIENCY

44. Vulnerability assessment & community resilience plan
45. Local hazard mitigation plan
46. Evacuation & early warning plan
47. Storm debris management plan
48. Stormwater management plan



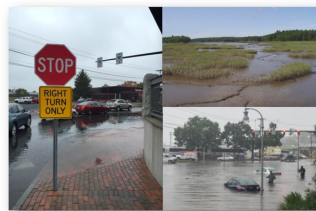
<https://www.nrcm.org/programs/climate/global-warming-air-pollution/sea-level-rise-maine/sea-level-rise-maps/>



MANAGE FLOOD RISK

49. Complete the Maine Flood Resilience Checklist
50. Participate in the National Flood Insurance Program
51. Map & incorporate sea level rise projections in plans/ policies
52. Adopt freeboard requirements

Maine Flood Resilience Checklist



A self-assessment tool for Maine's coastal communities to evaluate vulnerability to flood hazards and increase resilience



What is Freeboard?
Raise Your Home, Lower Your Payments

Without Freeboard

Annual flood insurance: \$7,750

With 2' of Freeboard

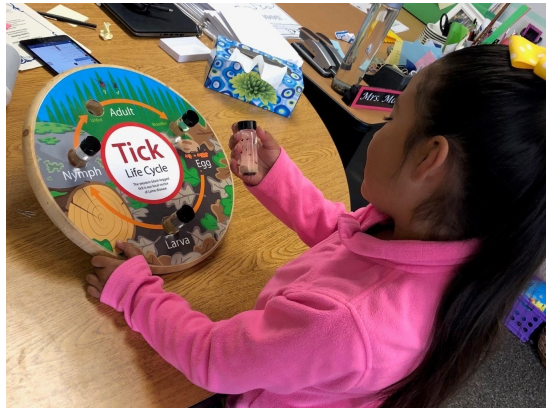
Annual flood insurance: \$3,440

What is Freeboard?
Freeboard is elevating a building's lowest floor above predicted flood elevations by a small additional height (generally 1-3 feet above National Flood Insurance Program (NFIP) minimum height requirements). Elevating a home a few feet above legally mandated heights has very little effect on its overall look, yet it can lead to substantial reductions in flood insurance, significantly decrease the

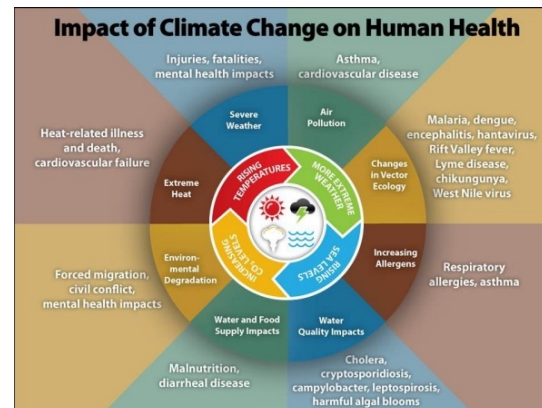
Better preparation for ongoing sea level rise.
Historically, Maryland has experienced a relative sea level rise of approximately 1 foot over the past 100 years. In the future, however, due to the combined forces of regional land subsidence and global climate change, Maryland may experience 3-4 feet of sea level rise over the next century. Since elevations on FRMs do not include sea level rise, freeboard will help keep structures above floodwaters as storm surge elevations increase.

Protect buildings and reduce monthly expenses with freeboard!

<https://twitter.com/nprosenheim/status/452465018278117376>



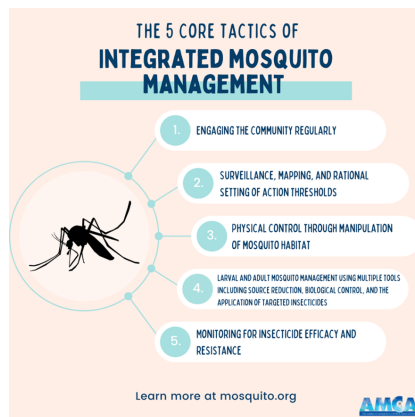
<https://www.msosquito.org/tick-school>



<https://www.tn.gov/health/cedep/environmental/climate-change.html>



<https://www.galioninquirer.com/top-stories/37691/prepare-for-bitter-cold-check-on-loved-ones>



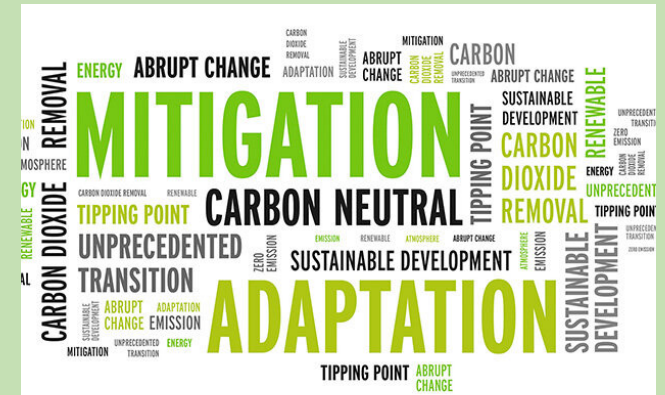
<https://entomologytoday.org/2021/12/08/integrated-mosquito-management-protects-people-animals/>

PROTECT PUBLIC HEALTH

53. Identify & reduce public health threats from climate change
54. Adopt an extreme temperature emergency plan
55. Adopt a peer-to-peer extreme weather checking program
56. Decrease mosquito habitat
57. Implement tick & mosquito education in schools
58. Amplify public health advisories for climate-related health/weather events



https://sema.dps.mo.gov/plan_and_prepare/heat_wave.php
<https://www.cityofflint.com/2019/07/18/37385/>



Sustainable Business Challenge

ENGAGE & EDUCATE

59. Establish a community energy/climate action committee
60. Implement a community climate change education/engagement program
61. Engage youth in resilience, clean energy & energy reduction
62. Engage vulnerable populations in resilience, clean energy & energy reduction
63. Create/support an energy reduction challenge among businesses



Empowering Vulnerable Populations